

Specifications of Solar Pro



| | | |
|-----------------------|--|---|
| System Requirements | OS : Windows Vista / 7 / 8.1 / 10 CPU : More than Clock 1GHz Memory : More than 512MB Hard Disk : 500MB of available space Screen Resolution : More than 1,366*768 USB Port : USB 1.1 or higher | |
| Meteorological Data | Built-in Data | World 1,360 places MONSOLA-11 |
| | Importable Data | Actual measured data meteonorm annual data SolarGIS (TMY data) NSRDB (SUNY 10-km gridded data) TMY 3 data METPV-11 |
| Circuit Configuration | Cell Type | Mono-crystalline, Polycrystalline, Amorphous, Hybrid, HIT, CIS, CIGS |
| | Inverter | Up to 400 inverters |
| | Number of Modules | Up to 160,000 modules |
| | Max. Series-Parallel Module Number | Limitless within number of modules |
| Creatable Objects | PV Array (Up to 400 modules for each array), House, Building, Array Area, Pyramid, Prism, Truncated Pyramid, Free Form, Tree, Polyhedron, Skyline | |

Photovoltaic System Simulation Software

Solar Pro™

Laplace Systems Co., Ltd.

E-mail: lapsys_e@lapsys.co.jp

<https://www.lapsys.co.jp/english/>

[Head Office]

1-245 Kyomachi, Fushimi-ku, Kyoto, 612-8083, Japan TEL : +81-75-604-4731 FAX : +81-75-621-3665

[Tokyo Office]

Shinjuku Gyoen Bldg. 4th Floor, 2-3-10 Shinjuku, Shinjuku-ku, Tokyo, 160-0022, Japan
TEL : +81-3-6457-8026 FAX : +81-3-6457-8027

[Laplace Systems, Inc.]

197 E. Hamilton Ave., Suite 203, Campbell, CA 95008, USA
TEL : +1-408-628-1728 FAX : +1-669-222-6050

This brochure's described contents are as of November 2017. Specifications are subject to change without notice.

High accuracy simulation software, acknowledge by the world.

World's first full-scale simulation software

Solar Pro is a full-fledged simulation software released ahead of the world in 1997. It achieves highly precise, module-level power and energy generation calculation by the integration of instantaneous values taking into consideration the effects of solar radiation and shading.

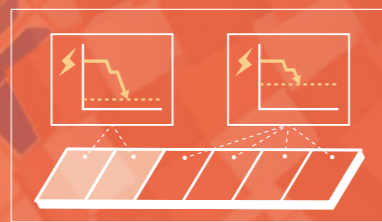
State-of-the-art technology recognized by the world

It was introduced as state-of-the-art simulation software by "PHOTON", Photovoltaic specialized magazine in Germany in 2001, after that we have continued improvements constantly. Solar Pro has been widely used in the world.

Contributing to the dissemination of photovoltaic power generation

Solar Pro's technology has been highly appreciated by many public institutions. We received Kyoto SME Excellence Technology Award in 2003, and were also elected as an accredited project for Small Business Creative Activity Promotion Act and an Oscar certified company.

Precise simulation considering the influence of shadows



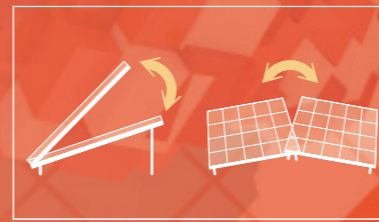
If the module is partially shaded, the power generation capacity of the entire string decreases, and the power generation of the system decreases markedly. Solar Pro will perform accurate simulation taking into consideration the influence of shadows in module units.

Simple drawing complex system



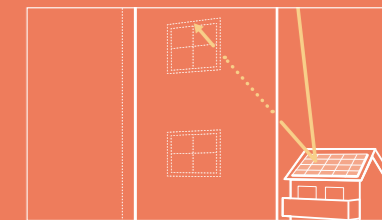
It corresponds widely to placement method such as flat putting and wall setting, system of tracking type and Furthermore, it is possible to adjust back and forth or right and left, and to a direction different from the tilt of

function for designs



method such as flat putting and wall setting, system of tracking type and Furthermore, it is possible to adjust back and forth or right and left, and to a direction different from the tilt of the roof or placed in a complicated place.

Reflected light simulation to prevent light damage beforehand



The glare of the reflected light of the solar panel became a social problem, and consideration to reflected light became indispensable when examining panel installation method. With Solar Pro, you can specify seasons and time zones and see how the reflected light affects the surroundings.

Solar Pro's examples of use

Flexible layout design of solar panels

Many simulation software programs have restrictions on designing solar panel orientations and angles. With Solar Pro, you can perform simulations in any arrangement pattern, such as the entire wall of a building or a panel arrangement in a complicated slope.

For example, this complicated design...

- 1 Placing panels across the wall
- 2 Arranging 6 kinds of panels
- 3 Incrementally changing panel angles
- 4 Arrangement in which reflected light does not hit the surroundings



Solar Pro can do!

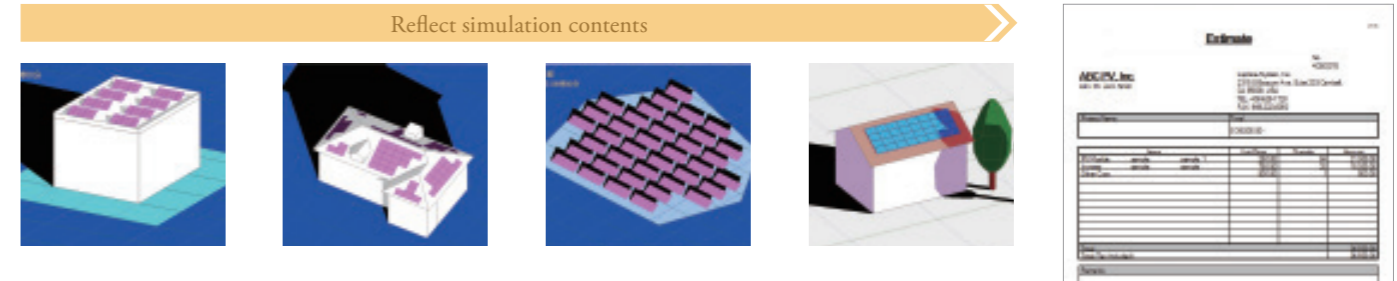
- 1 Design the number of panels, the direction of installation, the pitch, etc., and fill the wall with countless panels
- 2 Considering the characteristics of each panel, design to maximize the amount of power generation.
- 3 We set the inclination angle finely for each panel and design so that each panel is hit by sunlight for a longer time.
- 4 Confirm the display and trajectory of reflected light on the 3D CAD drawing and pay attention to surrounding buildings and transportation facilities

Promotion and Sales activities

In addition to conducting simulations, Solar Pro can organize the cost of the designed equipment into an estimate, or you can create a customized report using the derived results.

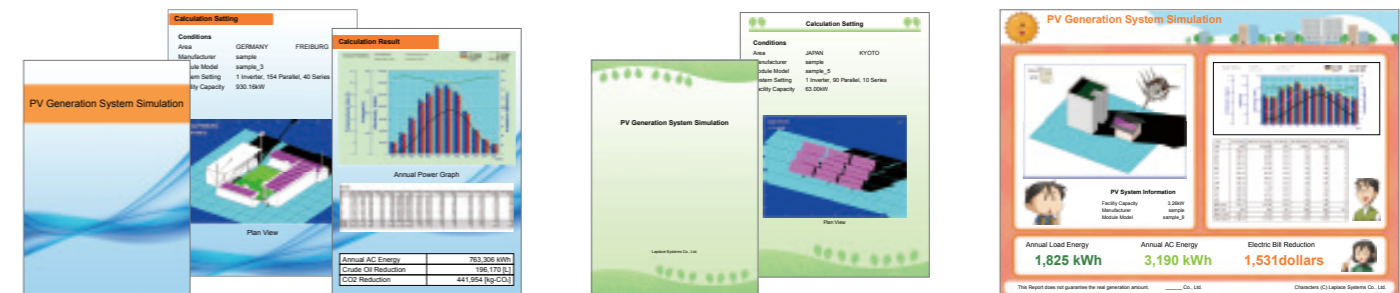
Cost Estimate

Users can create and print a project cost estimate that includes a bill of material for modules and inverters. Construction, Equipment, and other miscellaneous costs can also be added.



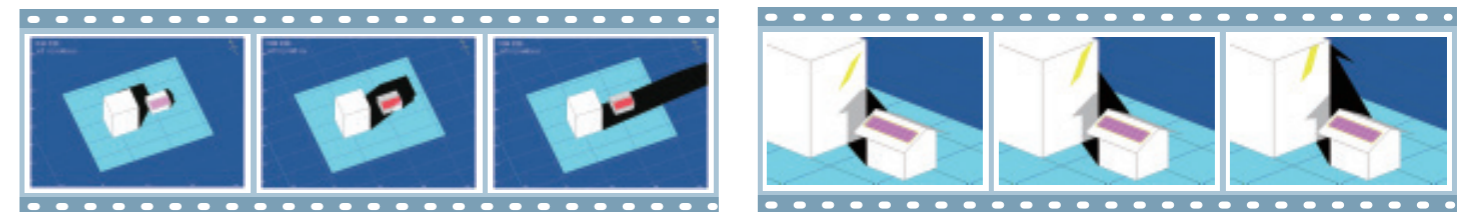
Create original reports NEW

From detailed simulation results, you can freely arrange graphs and forms to create customized reports.



Education and Research

Solar Pro, which enables accurate simulation of various patterns, is also ideal for research and educational use of photovoltaic power generation. You can learn expert system designs easily by understanding motion of shadows and reflected light with animation.



Confirm animation of shadow movement

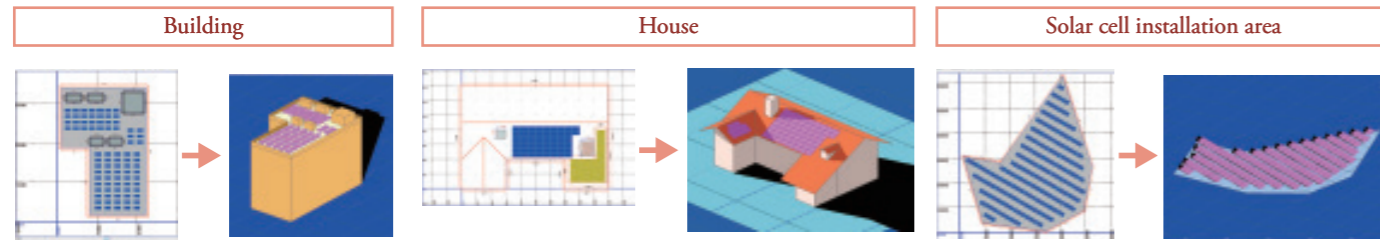
Confirm movement of reflected light with animation

Function Guide

Enhanced design support function

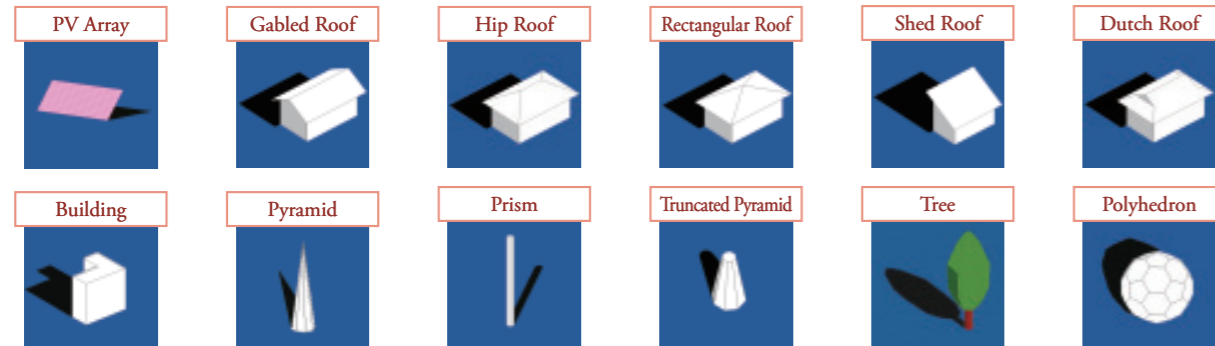
Framing plan input function

You can design buildings and install PV modules efficiently with this function. You can also create buildings intuitively with mouse and read a DXF file as a draft to draw a roof. It is easy to set up under complicated conditions with disapproval area, dormer, chimney, and auto module installation functions.



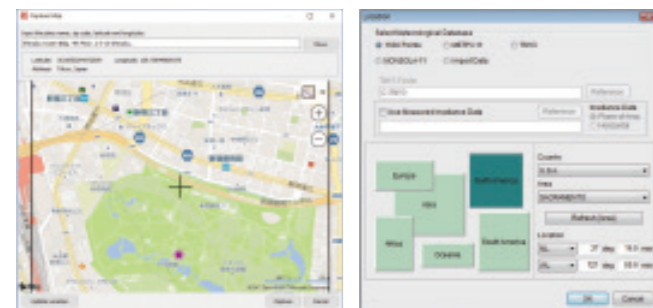
Choose Building Shapes

You can choose default building shapes such as buildings and houses which are close to their complete images.



Map Service

Insert Bing Maps images into 3D CAD interface to aid in precise design. Solar Pro can also import screenshots and other image files.



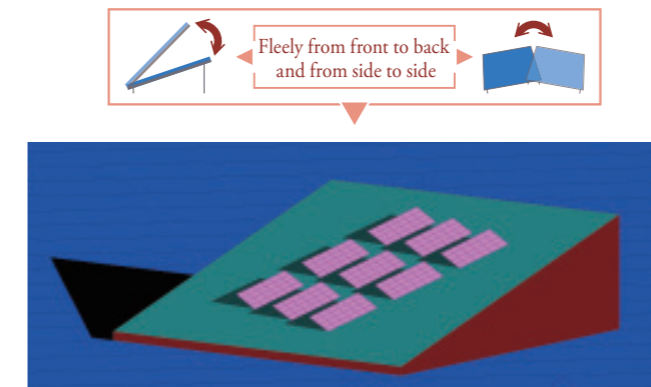
Simulation Wizard

Solar Pro has the useful wizard function for rough estimations so that users without any PV/architectural knowledge can operate PV power simulation without difficulty. Additionally, objects are able to be modified through the detailed setting menu. In case of covering solar panels over roofs and walls, setting is simple.

Increased variation of photovoltaic array tilt

NEW

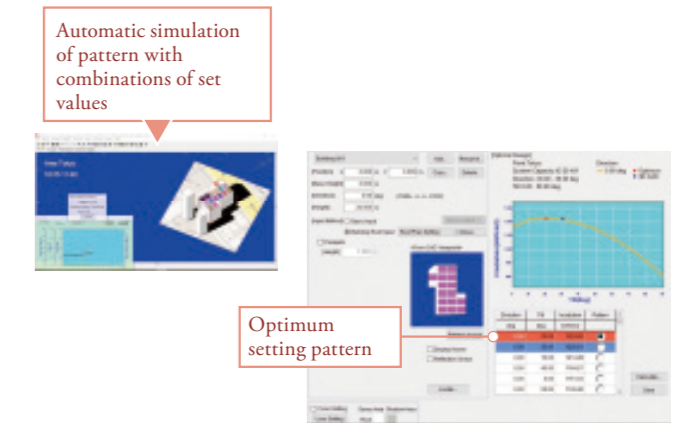
In addition to adjust the tilt of photovoltaic array back and forth, it can adjust the tilt right and left. The tilt of PV array also can be directed to a different direction from the tilt of the roof or simulated in a complicated place.



Optimum design

NEW

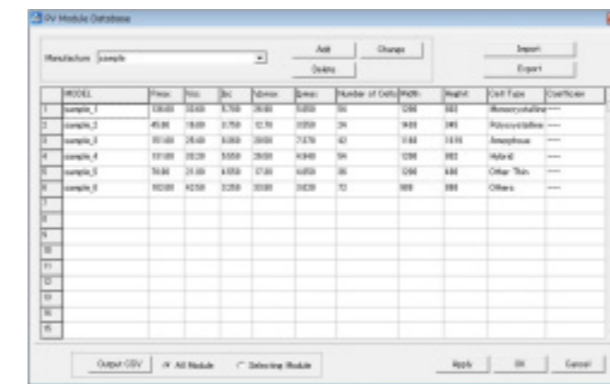
Designed to simulate the array azimuth angle, panel orientation, and arrays spacing to maximize annual / daily electricity generation. Lead to more efficient design by realizing optimized design per parameter.



Comprehensive database to increase accuracy

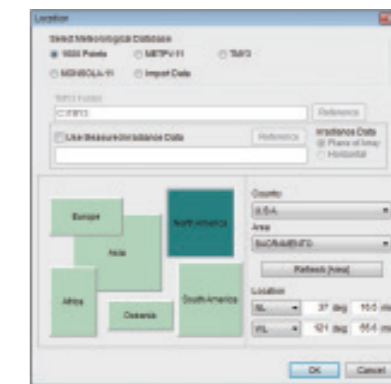
Photon Module and Inverter Database

It has a variety of module and inverter data from the Photon database.



Various Weather Data

It can import various weather data such as Meteonorm annual data, SolarGIS (TMY data), NSRDB (SUNY 10-km gridded data), METPV-11, etc.



Function Guide

Various display functions

Shadow Movements

By inputting location (longitude and latitude), and date and time, you can see a shadow at the entered location and time. It also shows the continuous movements of shadows during the day by animation.

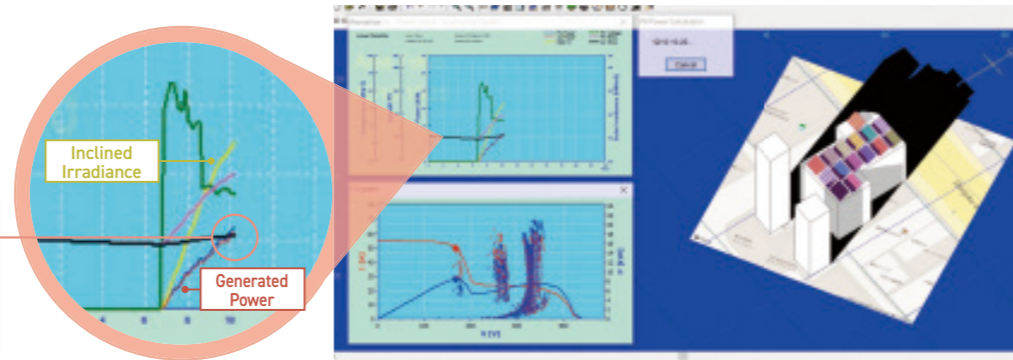
Shadow Trajectory

It shows all shadow trajectories within designated time interval. You can fully see shadow patterns in the time interval even when shadows inter-cross each other complicatedly.

Interlocked with Shadow Movement

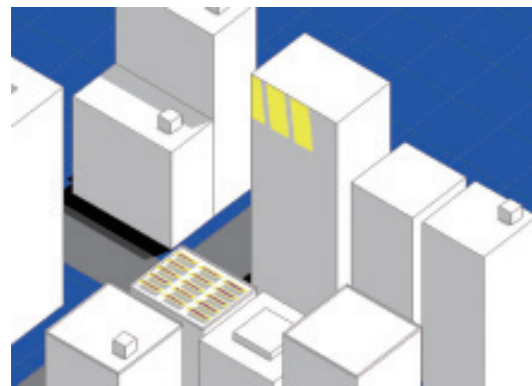
Calculation and shadow movement on the CAD screen are interlocked so that you can see the shadow influence reflected on the graph.

At the moment when the shadow falls onto the surface, you can see that the generated electricity is lower with respect to the solar radiation intensity.



Reflected Light Movement

By inputting location (longitude and latitude), and date and time, users can see reflected lights. It also shows the continuous movements of reflected lights during a day by animation.



Reflected Light Trajectory

It shows all reflected light trajectories within designated time interval. You can see how reflected lights affect nearby buildings.

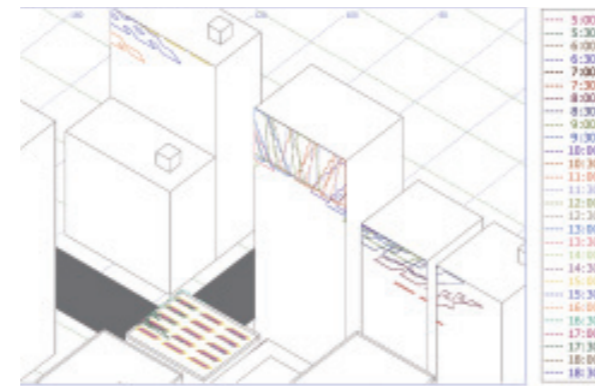


Image and video output

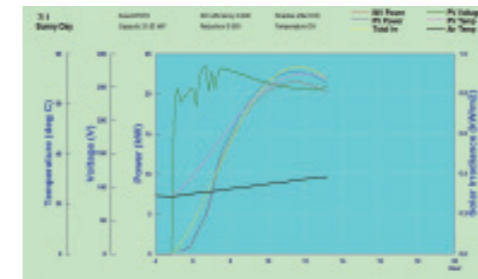
NEW

Simulation results of shadows and reflected light can be output as images and videos. It is also possible to set titles and comments on videos. You can see images and videos of simulation results on personal computer, smartphone or tablet, so you can use it widely for presentations, PR, etc.

Prediction of power generation by highly scientific calculations based on instantaneous value

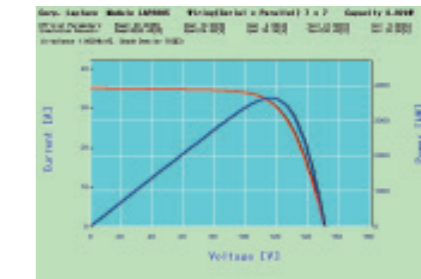
Integration of Instantaneous Calculations

Integrating instantaneous calculations of irradiance, instead of the simple calculation based on the annual irradiation amount, results in valid and precise calculation of generated energy. It supports arch type, tracking type and other special systems, too.



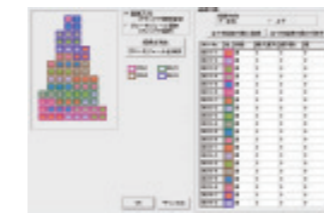
Calculation on I-V Characteristics Graph

By calculating PV system as a circuit combing the current equation per module, it shows a precise I-V curve which takes account of circuit linkage of each module. Various changes of I-V curves resulted from the deference of the shadow influence can be compared, therefore evaluation on environment where a system performs effectively.



Module connection setting

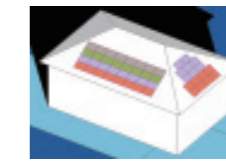
You can design module connections. Modules are colored to visualize strings and inverter connections on the 3D CAD screen. It is possible to connect across arrays and multiple inverters.



Setting Screen



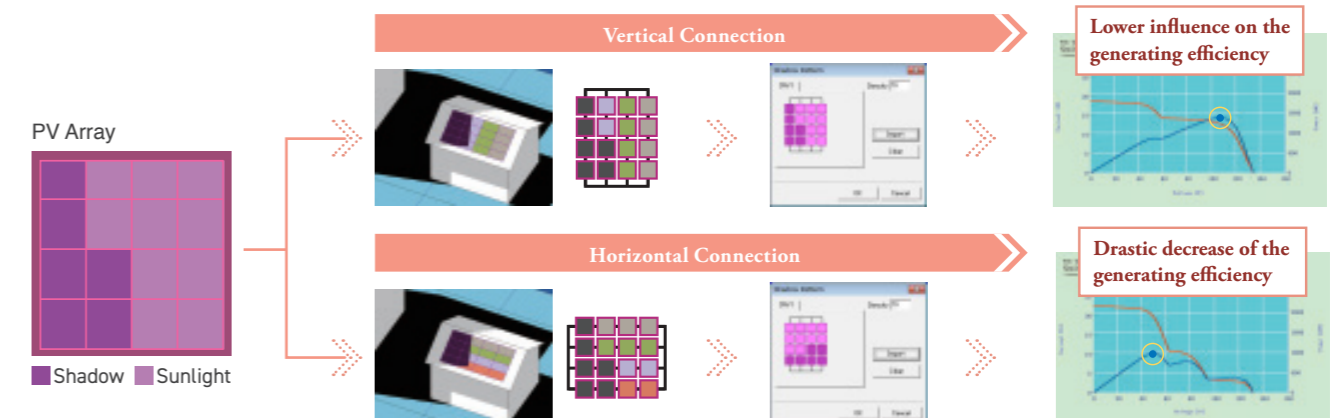
Colored by Inverters



Colored by Strings

Interlock between Module Connection and Shadow Figure

You can find module connections relatively unaffected by shadows with designing them in a different direction. As fig. 1 shows, in case the shadows are falling on the PV arrays similarly, the generated power is largely different depending on a way of module connection.



Simulation principle of Solar Pro

Solar Pro integrates the instantaneous value of the generated electric power and leads to highly accurate results.

Enable highly accurate and scientifically grounded calculations by integrating instantaneous values instead of calculating from annual accumulated solar radiation.

Plot the maximum power point obtained from the IV curve as generated power.

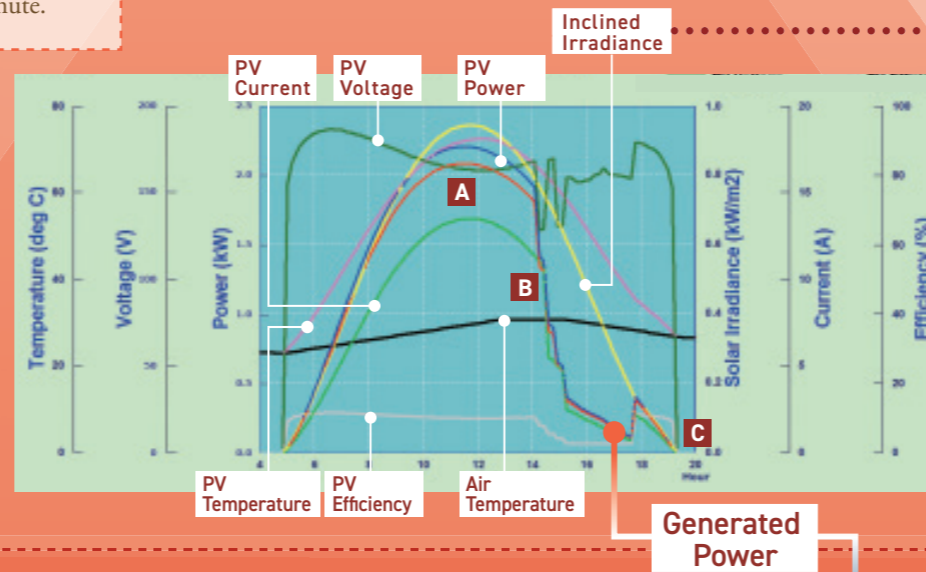
Solve simultaneous equations for the number of modules and find the combination of electric current and voltage.

There are detailed calculations and simple calculations for yearly calculations. You can also select the calculation interval in units of 1 minute.

1 year energy generation graph



1 day energy generation graph



The solar radiation incident on the PV array is calculated using direct irradiance, scattered light, and ground reflected light. This allows you to determine the total amount of solar radiation (tilted surface solar radiation) received by the PV array, whatever orientation the PV array is installed in.



A Temperature Influences

Rise in PV temperature during daytime shows decrease in voltage. It is one of the unique characteristics of Solar Pro to analyze the influence by temperature at the voltage base.



B Shadow Influences

This graph shows electric decreasing voltage, electric current, and electric power. It can reflect the calculation of shadow changing momentarily.



C Operating Conditions on Inverters

It reflects inverter's setting such as operate, stop, action on capacity-over.

2

Calculation on I-V Characteristics Graph

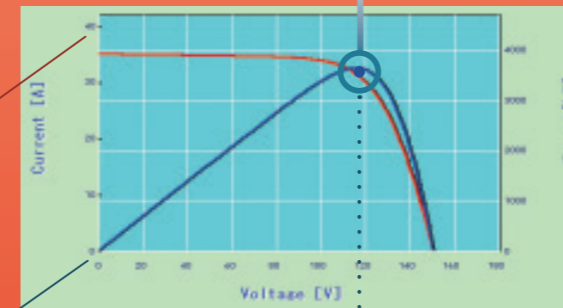
Draw an IV curve from a combination of electric current and voltage and find the maximum power point.

I-V curve

An I-V curve graph is a basic graph displaying performance of PV modules. In Solar Pro, a possible combination of electric current and voltage is calculated precisely by altering load resistance accordingly.

P-V curve

A P-V curve consists of electric power and electric voltage.



Maximum Power Point

It is the point where modules are able to deliver maximum power which determines operating voltage and current.

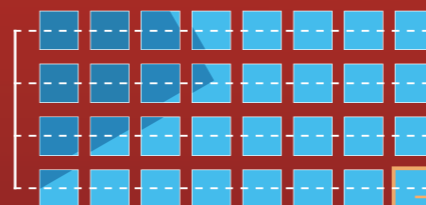
*Maximum Power Point per inverter, string, and module can be calculated.

Calculation per Module

Calculate the current equation taking into consideration the state of sunshine and shadow for each module.

A combination of electric current and voltage is derived according to the situation such as the installation condition of each module and the type of module, and is represented as an IV curve. Therefore, it is possible to calculate accurately even in complicated situations such as different installation conditions and modules in different wiring configurations.

$$\text{calculation : } I = I_{ph} - I_0 [\exp\{C(V + I R_s)\} - 1] - (V + I R_s) / R_p$$



It reflects the state and connection of modules one by one.

Consider the effects of shading on all modules in a string, not just the one being shaded.

1