

Solar ProTM 4.3

Photovoltaic System Simulation Software

What's new with Solar Pro 4.3?

Solar Pro 4.3 brings together new capabilities and enhancements that offer a more comprehensive approach to guide and optimize complete PV system designs including Bing Maps integration, 3D CAD enhancement, expanded Cost Estimating, and support for Japanese weather data.

Cost Estimate

Conditions List

Map Service

3D CAD enhancement

Japanese Weather Data

NEW!!

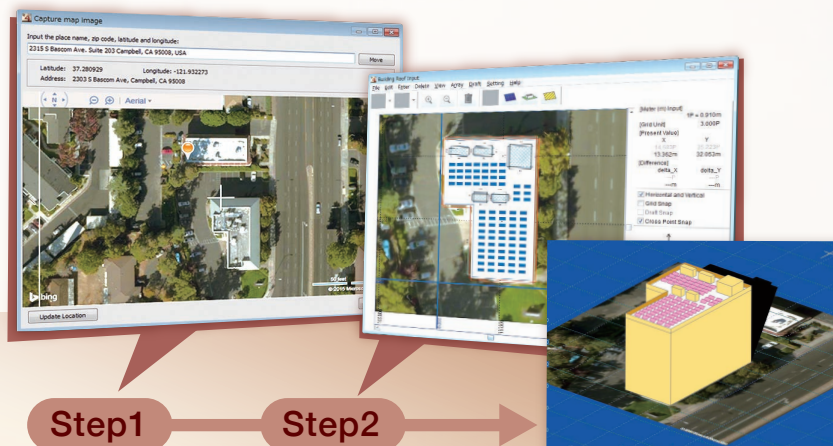
New Features

Solar Pro 4.3 delivers major advancements to complete the PV design & simulation workflow.

1

Map Service

Insert Bing Maps* images into 3D CAD interface to aid in precise design. Solar Pro can also import screenshots and other image files.



*Bing Maps is either registered trademark or trademark of Microsoft Corporation in the United States and/or other countries.

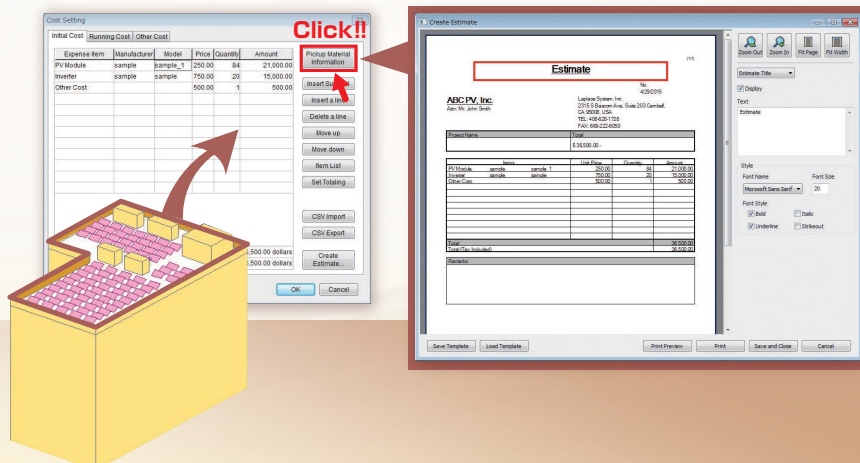
Step1

Step2

2

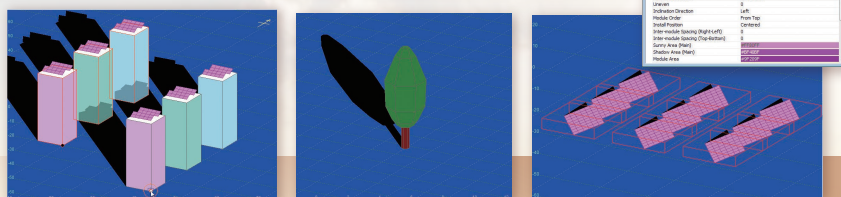
Cost Estimate

Users can create and print a project cost estimate that includes a bill of material for modules and inverters. Construction, Equipment, and other miscellaneous costs can also be added.



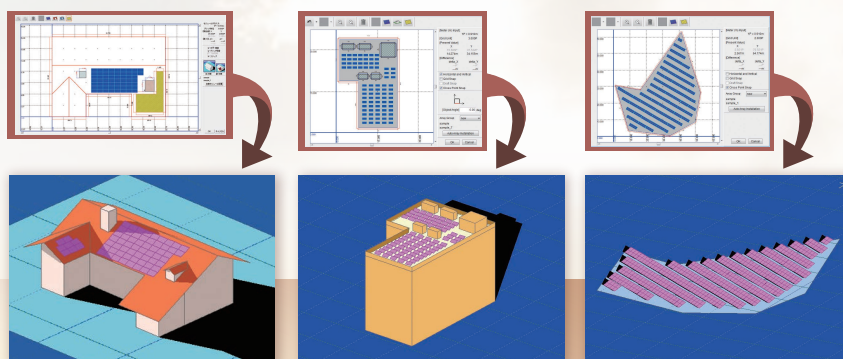
3 3D CAD enhancement

The 3DCAD Interface has been updated to enhance usability and functionality. Multiple objects can be selected and moved at once, objects can also be put into groups for easy manipulation, and the detection of overlapping objects has been improved.



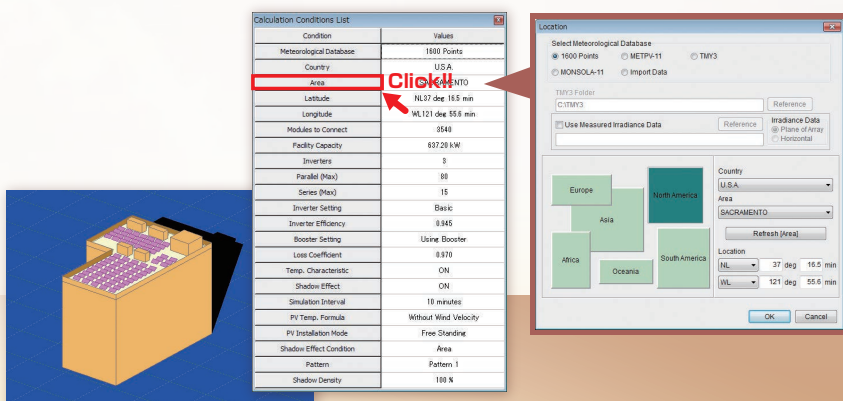
4 3D CAD enhancement

Site Design for ground based PV systems is now enhanced with the "Framing Plan Setting" Input window. Residential and Commercial roof design is also possible with "Roof Plan Input".



5 Conditions List

Calculation Conditions List presents the user with an editable list of the various Conditions and Values for a project. Click on a Condition to bring up its associated window.



Specifications

System Requirements	OS: Windows Vista / 7 / 8 / 8.1(32-bit application on 64-bit OS) CPU: Clock 1GHz Memory: 512MB	
	Hard Disk: 500MB of available space Screen Resolution: 1,366x768 USB Port: USB 1.1 or higher	
Meteorological Data	Built-in Data	World 1,360 places (2001) MONSOLA-11 (2012)
	Importable Data	Actual measured data (CSV format) meteoronorm annual data (more than 8,000 places) SolarGIS (TMY data) NSRDB (SUNY 10-km gridded data) TMY3 data (1,020 places) METPV-11 (2012)

Laplace Systems Co., Ltd.

【 Head Office 】

1-245 Kyomachi, Fushimi-ku, Kyoto, 612-8083, Japan TEL : +81-75-604-4731 FAX : +81-75-621-3665

【 Tokyo Office 】

Shinjyuku Gyoen Bldg. 4th Floor, 2-3-10 Shinjuku, Shinjuku-ku, Tokyo, 160-0022, Japan
TEL : +81-3-6457-8026 FAX : +81-3-6457-8027

【 Laplace Systems, Inc. 】

197 E. Hamilton Ave., Suite 203, Campbell, CA 95008, USA
TEL : +1-408-628-1728 FAX : +1-669-222-6050

E-mail: lapsys_e@lapsys.co.jp

<http://www.lapsys.co.jp/english/>